



**AnNex**  
Animal Research Nexus

# Welcome to the 'Researching Animal Research' Workshop

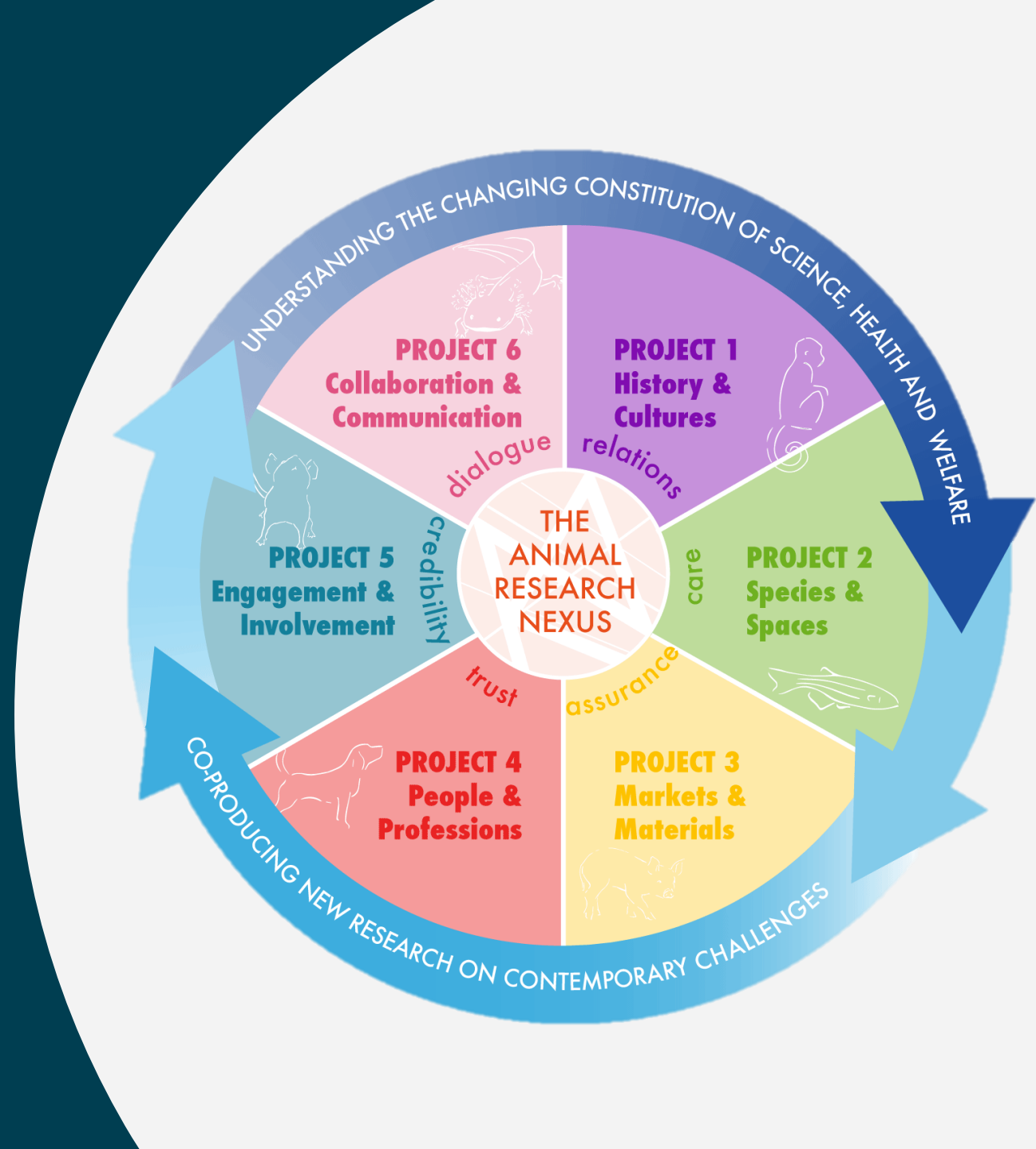
**Network:** Wellcome Wi-Fi

**Select:** Registered user

**Username:** EventSpaces

**Password:** 716945

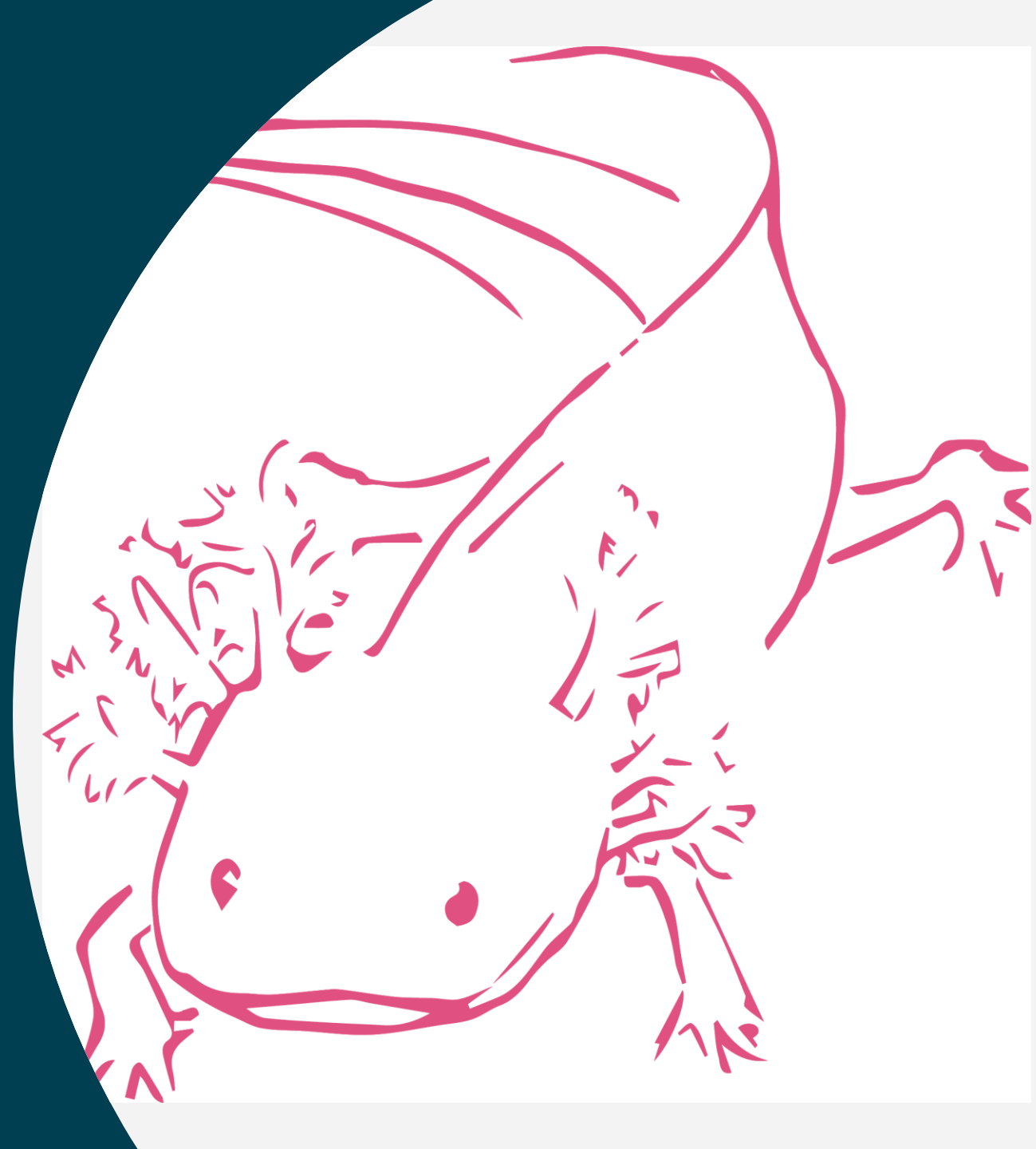
**Conference hashtag:** #ResearchingAnimalResearch





**AnNex**  
Animal Research Nexus

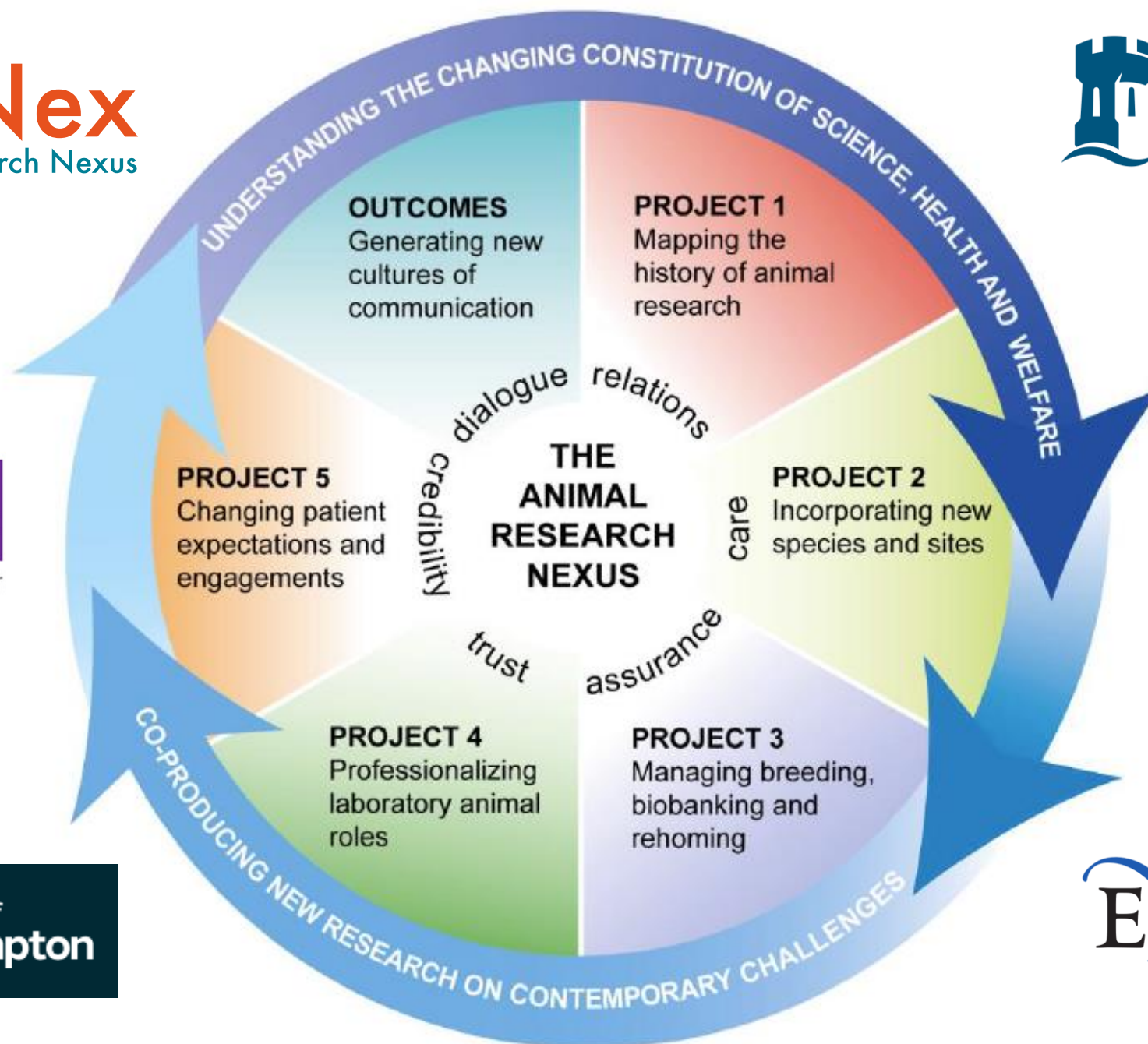
# Celebrating the Animal Research Nexus



# Why Animal Research Nexus?

The **animal research nexus** refers to the interrelations between science, health and animal welfare, held together through networks of law, responsibility, trust and care. Together these have forged broad social acceptance of laboratory animal research in the UK, so long as animal use and suffering are minimized and health outcomes are realized.

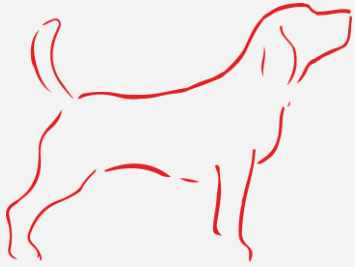
Yet, the recent historical development of these interrelations and the stability of their current constitution remain to be fully understood. Moreover, rapid developments in biomedical science, transformations across health and society, and changes in policy and regulation are raising both new opportunities and challenges.











# Making collaboration work...

PUBLISH ABOUT BROWSE

## PLOS ONE

OPEN ACCESS PEER-REVIEWED

RESEARCH ARTICLE

### Developing a Collaborative Agenda for Humanities and Social Scientific Research on Laboratory Animal Science and Welfare

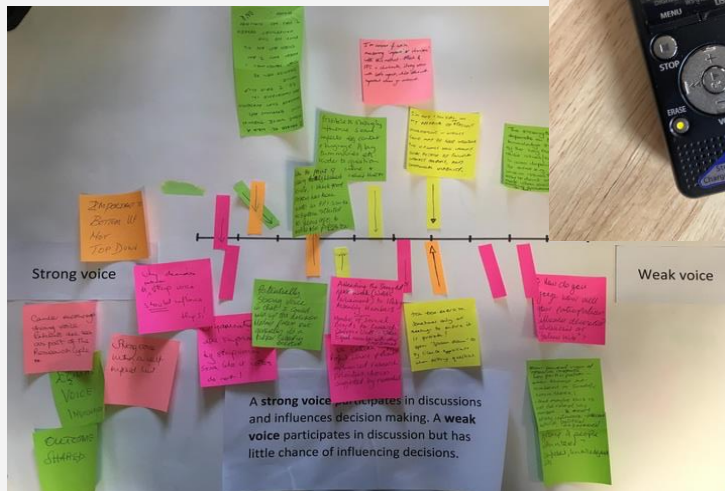
Gail F. Davies, Beth J. Greenhough, Pru Hobson-West, Robert G. W. Kirk, Ken Applebee, Laura C. Bellingan, Manuel Berdoy, Henry Buller, Helen J. Cassaday, Keith Davies, Daniela Diefenbacher, Tone Druglitrø, Maria Paula Escobar, [...], Sarah Wolfensohn



Microsoft Teams



# Generating data



## Introducing the Animal Research Nexus

A Wellcome Trust Collaborative Award <https://animalresearchnexus.org/>

### What is the Animal Research Nexus Programme about?

Using animals in research has been critical to the development of modern medicine, generating improvements in human and animal health. Nevertheless, animal research remains controversial, and developments in biomedical science, transformations across health and society, and changes in policy and regulation are raising new opportunities and challenges. Our programme of research seeks to understand the historic and present-day links between science, health, and animal welfare, to identify the emerging challenges to laboratory animal research, and to build new conversations around them.

Our programme has several strands exploring these challenges from different perspectives. We are interested in the histories and current practices which are shaping the kinds of species, places, professional roles, and patient expectations associated with animal research. We have a programme of public and stakeholder engagement that will help develop dialogue around the questions raised. These include: how best to care for novel model organisms; how to consider the ethics of new experimental sites like veterinary practices; how professional roles, identities, and training needs have changed; how to manage the increasingly global networks of animal research, and how to facilitate meaningful patient engagements with animal research.

The aim of this research is to inform academic debates, contribute to the development of policy, and inspire public debate. Research outputs will include academic publications, including books and international journal articles in social sciences and humanities; research reports in policy-relevant journals; short briefings for policy, practitioners, and public audiences; and stakeholder dissemination and public engagement activities.

### Who is carrying out the research?

We are a group of 15 researchers from five institutions, with a range of disciplinary backgrounds that include the social sciences, humanities, and veterinary sciences. Many of us have previous experience of working on laboratory animal research. We also all have experience of working with different public and stakeholder groups, including scientists, patients, publics, and policy-makers. We consider our range of experiences and backgrounds is important for understanding the past and current challenges related to animal research.



# Shaping academic debate







# Working with stakeholders

## Constructing and contesting veterinary expertise: professionals, publics and prospects

Tue 5 - Thu 7 Jul 2022

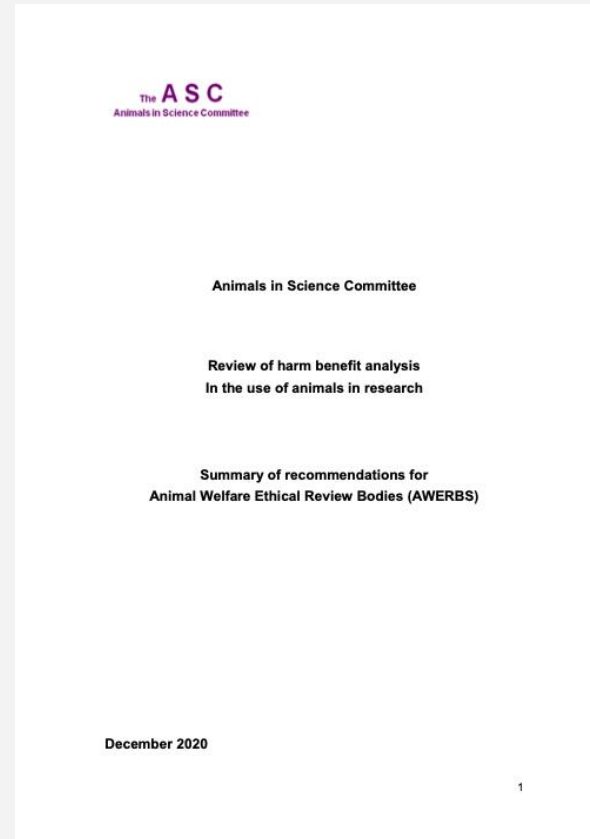
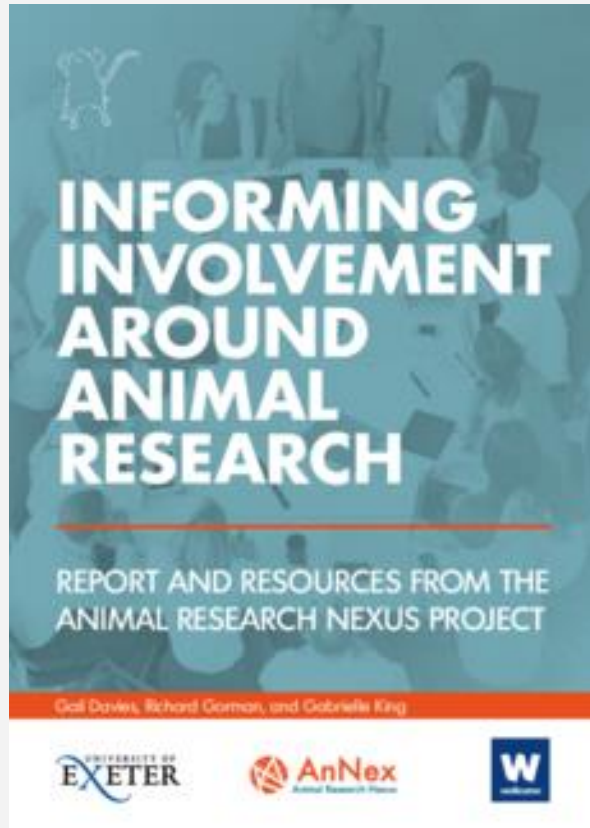
Online event

[Contact the events team](#) for further information about accessibility at this event





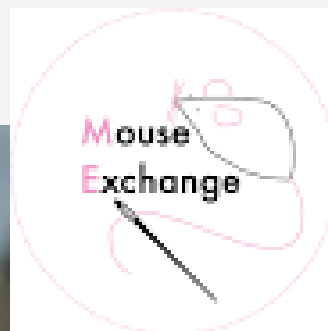
# Informing policy and practice

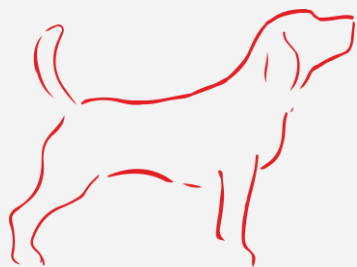




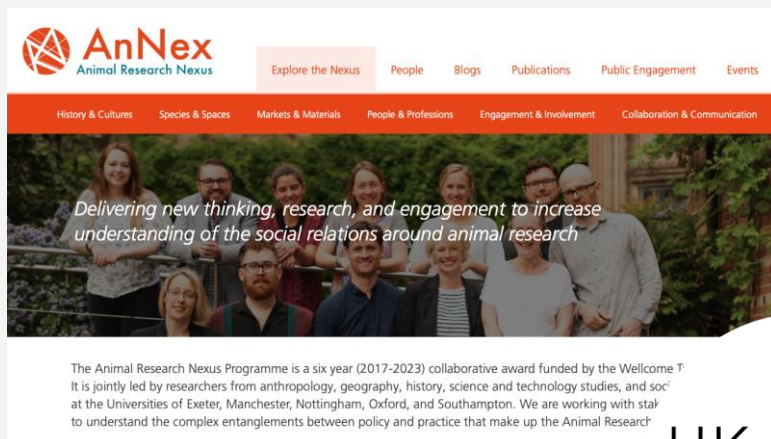


# Engaging publics





# Leaving a legacy



**AnNex**  
Animal Research Nexus

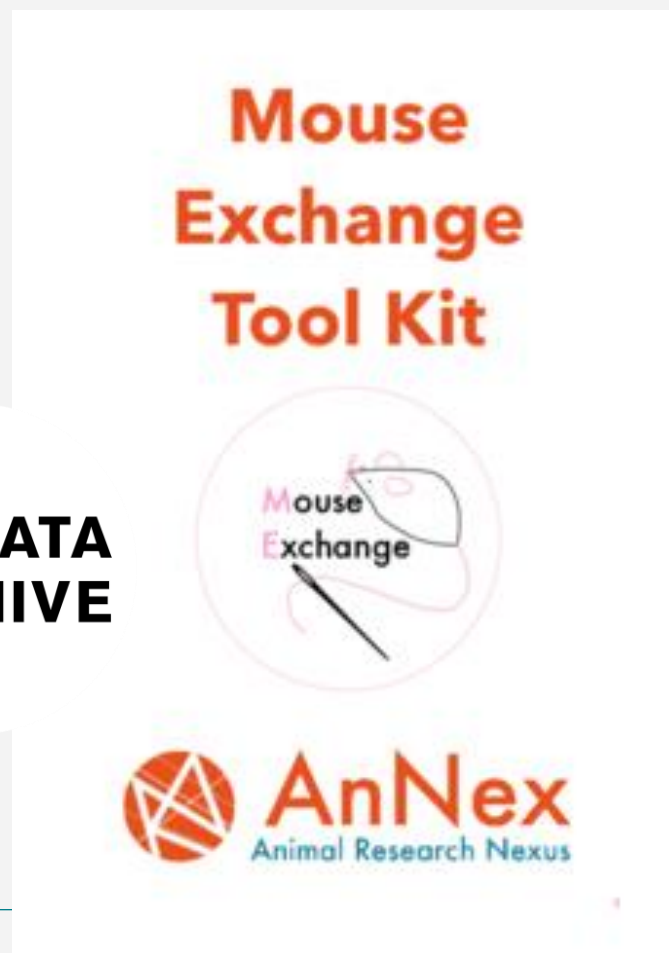
Explore the Nexus | People | Blogs | Publications | Public Engagement | Events

History & Cultures | Species & Spaces | Markets & Materials | People & Professions | Engagement & Involvement | Collaboration & Communication

*Delivering new thinking, research, and engagement to increase understanding of the social relations around animal research*

The Animal Research Nexus Programme is a six year (2017-2023) collaborative award funded by the Wellcome Trust. It is jointly led by researchers from anthropology, geography, history, science and technology studies, and social sciences at the Universities of Exeter, Manchester, Nottingham, Oxford, and Southampton. We are working with stakeholders to understand the complex entanglements between policy and practice that make up the Animal Research Nexus.

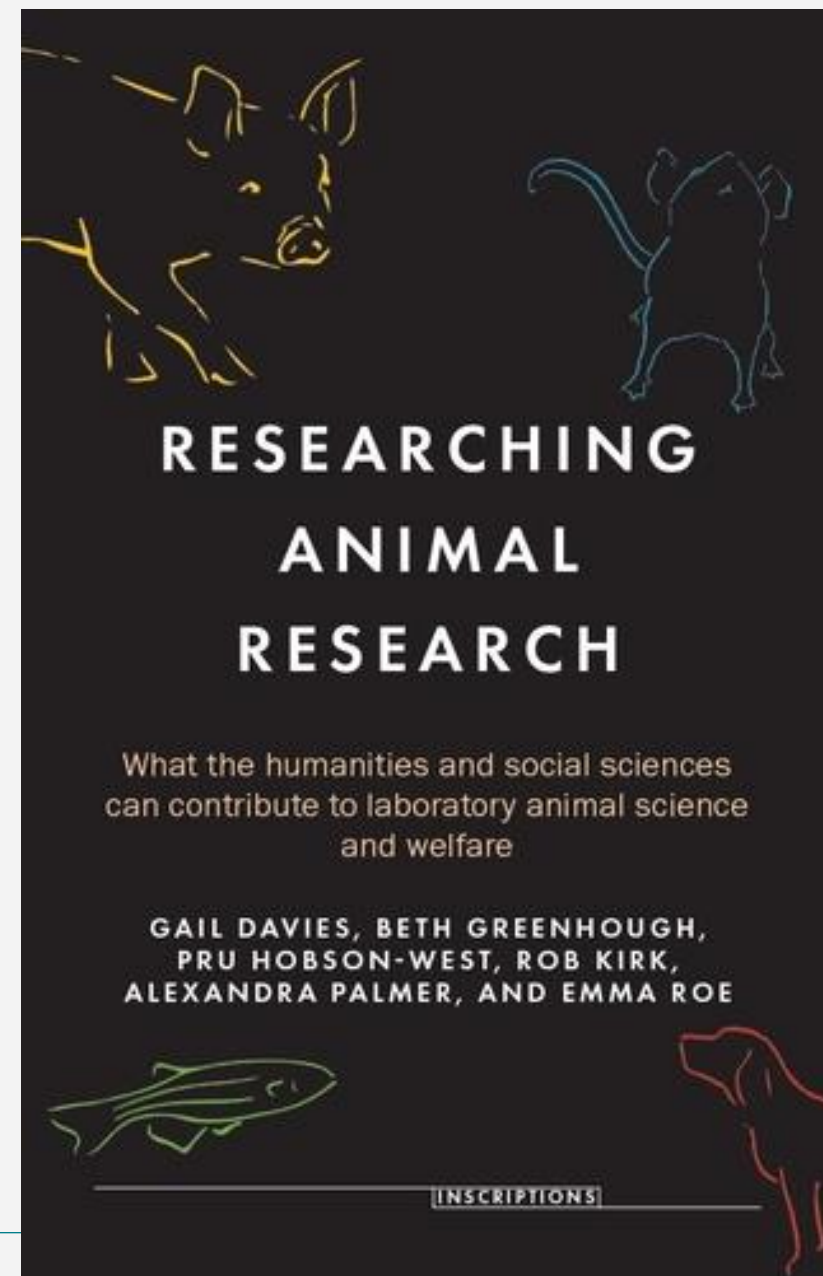
**UK • DATA  
ARCHIVE**



**Mouse  
Exchange  
Tool Kit**

Mouse Exchange

**AnNex**  
Animal Research Nexus



**RESEARCHING  
ANIMAL  
RESEARCH**

What the humanities and social sciences  
can contribute to laboratory animal science  
and welfare

GAIL DAVIES, BETH GREENHOUGH,  
PRU HOBSON-WEST, ROB KIRK,  
ALEXANDRA PALMER, AND EMMA ROE

**INSCRIPTIONS**





**Thank you**

